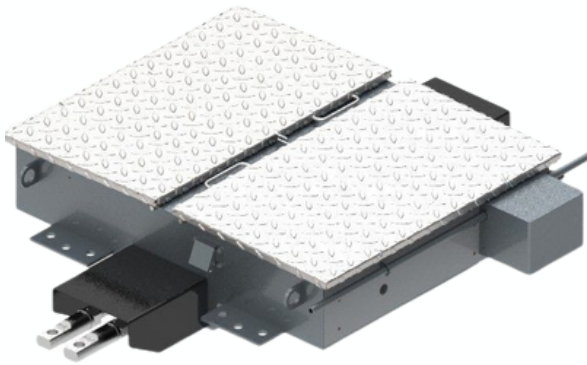


# ML-18C

## ELECTRICAL HYDRAULIC SWITCH MACHINE



The ML-18C resolves glaring safety and security issues with current outdated mainline switch machine technology.



The ML-18C is the newest leap in innovation brought to the industry by Advanced Rail Systems. The ML-18C is trailable, just like the other ARS switches, which further reduces the risk for machine damage in the event of a run-through. The broken rod with overthrow monitoring for both of the rods makes the machine the safest available.

- ✓ 2.5 Second Throw Speed
- ✓ Minimal Maintenance
- ✓ Trailable up to 30 mph without damage
- ✓ Multiple Control Methods

| Parameter                     | Specifications  | Parameter              | Specifications   |
|-------------------------------|---|------------------------|--|
| Length                        | 53.6" (136.1 cm)  | Throw Time             | 2.5 Seconds  |
| Width                         | 47.5" (120.6 cm)  | Temperature Range      | -40°F + 185°F (-40°C + 85°C)   |
| Height                        | 8.8" (22.3 cm)  | Throw Force            | 4,500Lbf (19.8KN)  |
| Weight                        | 680 Lb (308Kg)  | Control Voltage        | 10-24VDC   |
| Throw Length                  | 3.0 - 6.0 in (76 - 152 mm)  | Switch Point Detection | Inductive Proximity Sensors 9-30VDC<br>PNP-NO-12VDC output - 3 wire<br>NPN-NO-0VDC output - 3 wires<br>Fail-safe inductive sensors 9-30VDC - Option SIL2 |
| Power Voltage Options         | <ul style="list-style-type: none"> <li>• Solar Panel</li> <li>• Battery Charger (110/220V)</li> <li>• 115/230 AC <u>no battery</u></li> </ul> | Switch Control Methods | Remote - cable or data & VHF Radio<br>Local - Push Buttons<br>Manual - Hydraulic Hand Pump   |
| Spring Holding Force Combined | 1,600Lbf (7.1KN)  |                        |  |