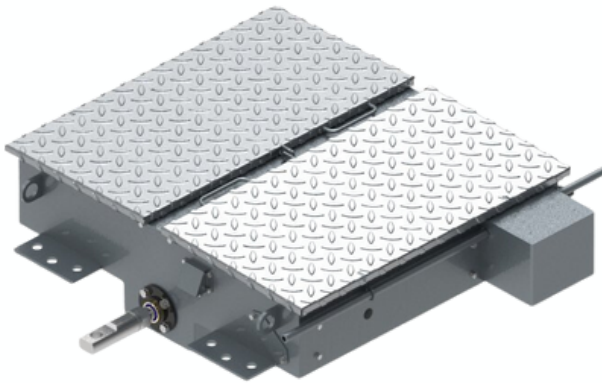


HSM-17

ELECTRICAL HYDRAULIC SWITCH MACHINE



The HSM-17 is a game changer with a throw time of 0.50 seconds, and 4,500-Lbf of throw force.



The HSM-17 is the second generation switch machine from the ARS engineering team. This machine was developed to replace present hump machine applications or where a quick throwing machine is required. The HSM-17 also requires minimal maintenance and comes in a 12VDC with battery or 120-volt DC version.

- ✓ 0.50 Second Throw Speed
- ✓ Minimal Maintenance
- ✓ High reliability and durability
- ✓ Multiple Control Methods

Parameter	Specifications	Parameter	Specifications
Length	44.00" (111.8cm)	Throw Time	0.5 Seconds
Width	39.64" (100.7 cm)	Temperature Range	-40°F + 185°F (-40°C +85°C)
Height	8.7" (22.1 cm)	Throw Force	4,500Lbf (19.8KN)
Weight	595Lb (270Kg)	Control Voltage	12-24VDC
Throw Length	3.0 - 6.0 in (76 - 152 mm)	Switch Point Detection	Inductive proximity sensors PNP - NO - 24VDC output - 3 wires
Power Voltage Options	<ul style="list-style-type: none"> • 12VDC with battery • 120 VDC <u>no</u> battery • 220/440VA C 3-phase 	Obstruction detection	Pressure switch - NC - 24VDC - 3 wires
Spring Holding Force	1,600Lbf (7.1KN)	Switch Control Methods	Remote - Cable or data & VHF Radio Local - Push Buttons Manual - Hydraulic Hand Pump